

Covering Pebworth and surrounding districts

# *Pebworth Piper*

September 2023



MacMillan Coffee  
Morning

Wildlife Photos

Harvest Supper

Village  
Noticeboard



# Welcome!



The Pebworth Piper is back after its summer break. As this is my first attempt at editing it, please excuse any errors or omissions. They are not intentional, but please do let me know about them. And please do keep sending in any material that you think would be of interest to local residents.

Once again, I'd like to thank Tracey, and also Kevin, for their brilliant work on the Piper over the last couple of years. We truly have a village magazine to be proud of. We all wish them well in their new life in Malvern.

Best wishes

*Karen*

*Happy reading!*

Please contact the editors with any contributions, photographs, news and announcements for the  
**October Piper** on or before **20<sup>th</sup> September**.

**Karen Pearson** at [kpearson@active-research.co.uk](mailto:kpearson@active-research.co.uk) 2 Wesley Gardens or 07887 613301

**Diana Beaumont** at [dianabeaumont@btinternet.com](mailto:dianabeaumont@btinternet.com) Meon House, Friday Street.



# In This Issue

---

**3 Details of Harvest Supper 2023**

**5 Church Services – September 2023**

**6 F-Street Band At The  
Pebworth - Masons Arms**

**7 MacMillan Coffee Morning  
Details**

**8 Wildlife Photographs**

**9 Comfort For Lonely Men**  
The latest AI-related story from  
Charles

**10 Pebworth and District WI**  
All the latest news.

**11 Pebworth in Bloom**

**12 Village Hall**  
Weekly groups.

**13 The Noticeboard**  
News of events and other notices.

**14 Coffee On The Close Dates**

**15 Village Quiz Details**

**16 Pebworth Rural Cinema**

**17 Wychavon Parish Games**

**19 Pebworth Parish Council**  
Minutes from the latest meeting.

**22 County Councillor Report**  
Update from Alastair Adams

**24 West Mercia Police**  
An update from our local policing  
team

**26 Village Organisations Contact  
List**

## Editors:

Karen Pearson  
Diana Beaumont

## Online Distributors:

Karen Pearson  
Ken Wood



# ***HARVEST SUPPER***

**Saturday  
7<sup>th</sup> October 2023**

Doors open 7.00 pm (Food served at 7:30) at  
Pebworth Village Hall

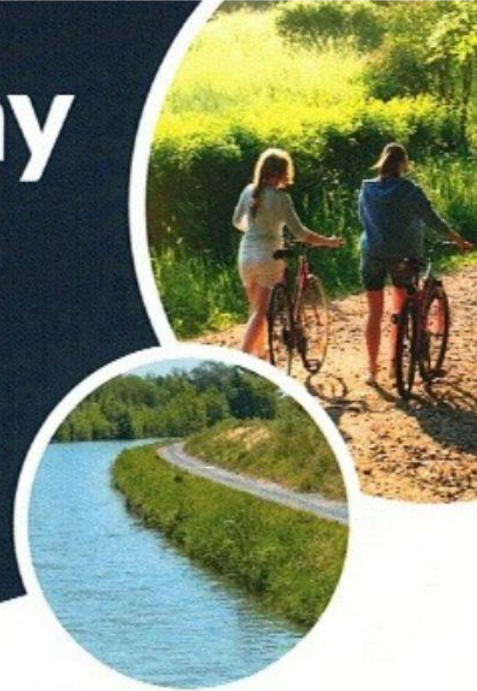
Hearty home cooked two course supper and some  
live entertainment!  
Licensed Bar & Raffle

**For TICKETS: £15 per person  
Please contact  
Yvonne on 01789 720296  
or Jane at [jvcromack@aol.com](mailto:jvcromack@aol.com)**

Proceeds to St Peter's Church and Pebworth Village  
Hall Funds

# Public Rights of Way in Worcestershire

There are 4604km (2861 miles) of network across Worcestershire, they can be found in towns, villages and the countryside. All Public Rights of Way should be denoted by a signpost or waymark. Some paths may be surfaced in towns but many follow tracks, cross fields or pass through woods in the countryside. The network is managed by the County Council with the help of volunteers



For information on Public Rights of Way please visit our website:  
[www.worcestershire.gov.uk/info/20237/public\\_rights\\_of\\_way](http://www.worcestershire.gov.uk/info/20237/public_rights_of_way)





Among other things here you will find:

- The Public Rights of Way interactive map for reporting defects found on the network
- Ways volunteers help us to maintain the PRoW network
- Details of promoted circular and linear routes

Please remember to follow the Countryside Code  
[www.gov.uk/government/publications/the-countryside-code](http://www.gov.uk/government/publications/the-countryside-code)



Paths should be signed from the roadside and the route is often waymarked by coloured arrows. Different types of Public Rights of Way can be used by different users:

-  **Footpaths** – indicated by yellow arrows; for use by walkers only.
-  **Bridleways** – indicated by blue arrows; for use by walkers, horse-riders and pedal cyclists.
-  **Restricted Byways** – indicated by plum-coloured arrows; for use by walkers, pedal cyclists, horse-riders and horse drawn vehicles.
-  **Byways** – open to all traffic (BOATs) – indicated by red arrows; for use by walkers, pedal cyclists, horse-riders, horse-drawn vehicles and motor vehicles.

To view the Public Rights of Way interactive map please visit:  
<https://gis.worcestershire.gov.uk/website/Countryside>



Please remember to follow the Countryside Code

If you have any comments or query's, please contact [countryside@worcestershire.gov.uk](mailto:countryside@worcestershire.gov.uk)



# VALE & COTSWOLD EDGE

The Parishes of Aston Sub  
Edge, Dorsington,  
Honeybourne, Pebworth,  
Weston sub Edge and  
Willersey with Saintbury

 VALE & COTSWOLD EDGE	Church Services - September					
	Pebworth	Dorsington	Honeybourne	Willersey	Weston sub Edge	Aston sub Edge
3 <sup>rd</sup> September Trinity 13			9.00 am Holy Communion (Traditional language)	10.00 am Morning Prayer (Modern language)		
10 <sup>th</sup> September Trinity 14	11.00 am Holy Communion (Modern language)		11.00 am Family Service at the Village Hall	9.00 am Holy Communion (Traditional language)	10.00 am Muddy Church	6.30 pm Evensong
17 <sup>th</sup> September Trinity 15			11.00 am Holy Communion (Modern language)	11.00 am All Age Service		6.30 pm Evensong
24 <sup>th</sup> September Trinity 16	11.00 am Family Service			10.00 am Morning Prayer (Modern language)		6.30 pm Holy Communion (Traditional language)
1 <sup>st</sup> October Trinity 17			9.00 am Holy Communion (Traditional language)	10.00 am Morning Prayer (Modern language)		

*Draw your  
Dog or Cat  
IN CHARCOAL*

## NEW WORKSHOP DATES

VENUE: MAPLE BARN STUDIO | PEBWORTH

SATURDAY 23RD SEPTEMBER - 10.30 | 4PM

FRIDAY 27TH OCTOBER - 10.30 | 4PM

TO BOOK:

HELLO@MOLLYANDMAUD.COM | WWW.MOLLYANDMAUD.COM



**The Pebworth - Masons Arms**

*presents*

**THE F STREET  
BAND**

**SATURDAY SEPT 2ND  
8 TIL LATE**

*Bar | Live Music*

**COME FOR  
COFFEE  
AND  
CAKE**

**WE ARE  
MACMILLAN.  
CANCER SUPPORT**



**MACMILLAN COFFEE MORNING**

**FRIDAY 29th SEPTEMBER**

**PEBWORTH VILLAGE HALL**

**10.30 - 12noon**

**Donations or raffle prizes would be very  
much appreciated.**

**Please contact Sally (720817) or Rachel  
(721513)**

# Wildlife Photos

Sent in by our readers



**White-tailed Eagles  
Mull, Scotland**

**By Steve Rawlins**



# Comfort for Lonely Men

Gilbert was not actually ugly, he was just ordinary, as men go, but his love life was listless. When approaching a person of the complementary gender, they were *not*, complimentary that is. His entitlement to equality in such matters was a troubling omission in his life. The Council said under Equality Guide Lines they could prescribe a Romanta-bot.

It was a humanitarian provision to alleviate depression. One could obtain a new romanta-bot on private insurance, if one fitted their criteria. Few did, of course. There was an A.I. face that came up, on one's computer screen, to consult when making an application. Its default setting was a voice with an indecipherable accent on a crackly line. Responsibility was thereby resisted. We all know about that sort of thing. Failing that, a thin fund was available to provide a pre-used romanta-bot for a few weeks. They were cleaned and oiled for each new recipient, usually. The condition of the paint and the speech function was variable. An ugly person could as well be issued a posh robot as with a peon. In consequence, such relationships tended to be short lived, as were the recipients. Beggars could not be choosers, unless one had friends in the Council offices, which most ugly people did not, of course.

Delivery day was Monday. He had received a notice on his phone to be ready. He was also referred to an online manual on how to interact with a romanta-bot. Gilbert had had little experience in how to deal with a feminine functioning human, he therefore had no familiarity with how to be familiar with a feminine functioning robot. He guessed it needed plugging in from time to time, like his vacuum cleaner. This bot climbed out of the van by herself and dismissed the driver with a flick. She had a rayon scarf flapping around her wig and spoke with a Scouse accent. The female gender-labelled robot clicked and clacked its way to Gilbert's front door and rattled his knocker.

Gilbert was nervous. He opened the door and was struck dumb. Not an unusual reaction for him when presented with any kind of female – cats included. The romanta-bot was gorgeous: blonde wig, angelic face shape set with big blue eyes and a regular row of shiny white teeth. She stood a little below his height, giving him the comfort of an upward adoring smile..

Her big blue perceptors had compared his visage with the photo pic on his council file and switched into greeting mode. He stepped back, his heart pumping.



She held him up with her strong outstretched arms. Gilbert had never been firmly hugged, least of all by a bountiful blonde beauty. He fainted. She lifted him onto the sofa. He woke to find a blonde loosening his tie and fell into an ecstasy again – fevered dreams beset him: This would do. This was what his life had lacked – he would pay his council tax without demur. Gilbert's animal spirits boiled. He gripped hold of the romanta-bot and kissed her.

*'Hello.'* said Gilbert. It was the most romantic thing he had ever said to a female of the species.

*'Alright luv. Let's ave a dose of the leccy.'*

Gilbert was uplifted, he would give her all the electricity she needed.

Charles©150723

*Charles*  
©150723

**W**alk barefoot on grass and have half an hour's sleep during the day – we all liked these 2 pieces of advice offered by Altair de Almeida, a holistic practitioner who joined us for our July meeting. We did not know what to expect from this speaker although he sounded intriguing but hoped to be shown how to look younger without the need for surgical facelifts. We all learned how to do that and so much more. In his wide ranging talk, he mentioned extra virgin olive oil, self massages, Tai Chi, statins, manifestation and visualisation, processed food and Malvern Spring water. Phew! But we all learned something from his talk and he seemed quite charmed by us!

The Kori Project for poor women and girls in Sierra Leone seems to have touched lots of hearts and we are continuing to collect unwanted cotton material, towels etc with pillowcases being extremely useful. These can be easily made into children's dresses and Susan has organised a sewing day for members in the village hall at the end of August for just this task. Bras are still coming in (over 450 now) and Anne's Bidford hairdresser has offered to be a collection point. In a very busy meeting with hardly time for a cup of tea never mind a slice of delicious cake, we formed a pop-up choir to sing "Thank you for being a friend" in aid of Dementia UK with singer Tony Christie, (music supplied from Jenny's phone and recorded on Charlotte's) and planned how to campaign for Cleaner Rivers for All – this could involve a visit to a riverside pub !

If you feel tempted to find out more about our WI this year, please contact our president Jenny McLeish ([jenny.mcl@tiscali.co.uk](mailto:jenny.mcl@tiscali.co.uk)) or go to [pebworth.org](http://pebworth.org) for the year's programme. Guests are welcome for £4 which includes refreshments.

## Next Meeting

**Our next meeting will be on Wed 6<sup>th</sup> September when we will be learning more about precious stones from gem-hunter Helen Plumb. At the time she was booked for our meeting she was about to go down a mine in Madagascar to look for sapphires !**





by **Jenny  
McLeish**

It's 13 years since Pebworth first welcomed RHS judges to the village in 2012 and on Thursday 13th this year we were just as excited and nervous to greet Roger Bache, President of Heart of England in Bloom and its treasurer Tony Comley. And we were thrilled at the huge numbers, including members of Pebworth School Gardening Club, who accepted the invitation to join us in the village hall to be reminded of what had been happening in 2023. Judges always comment on the response to Yvonne's thoughtful and humorous words and to Simon's technical wizardry with photos and music, and even though it got very emotional at times it started our tour of the village in a hugely positive way.



Everywhere we took the judges looked stunning and well cared for. They asked so many questions. Who does all this mowing? Where do you source the plants for the containers and who does all the watering? What type of deer are eating the fruit trees? How many hedgehogs have been re-homed? Are there residents in the duck lodge? Tell us about the Quiet Garden Trust. How many entries do you have for the potato challenge? Where do brown bin contents end up? Who's growing the Heart of England oak trees? Where are the swift boxes installed? What are the hire charges for the village hall? Is blue lias stone quarried locally? What did this area look like before volunteers improved it?

Even though some of these questions might seem irrelevant they all refer to the 3 core components on which we are judged – Horticultural Achievement, Environmental Responsibility and Community Participation. And after an exhausting morning and so much help from behind the scenes as usual, we sat down to lunch, relieved that it had all gone to plan, and delighted when Roger Bache told us the village and especially our volunteers and supporters were fantastic! We will find out in October when the results will be announced.

So another PIB year rolls on with judging for the Best Floral Display and the awarding of the Les Tustin Award taking place in August and don't think we've forgotten our famous Potato Challenge. The final Weigh-In and Breakfast BBQ is on Sun 3rd September, 10am at the village hall. Surely Nick Holdsworth won't win again.



# Pebworth Village Hall Weekly Groups

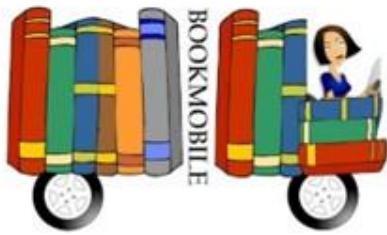
Jane Cromack

<b>Sunday</b>	<b>YOGA 7pm</b> with Jenny Tomes <a href="http://www.yogapractic.co.uk">www.yogapractic.co.uk</a>		
<b>Monday</b>	<b>YOGA 7pm</b> with Jenny Tomes <a href="http://www.yogapractic.co.uk">www.yogapractic.co.uk</a>		<b>First Monday</b> <b>MONTHLY</b> <b>PARISH COUNCIL</b> 7pm
<b>Tuesday</b>	<b>BRIDGE CLASSES 2pm</b> with Juanita 07856 565639 <a href="http://www.strengthandbalance.co.uk">www.strengthandbalance.co.uk</a>	<b>CHESS CLUB 6.30pm</b> <a href="mailto:pebworthchess@gmail.com">pebworthchess@gmail.com</a>	<b>MONTHLY</b> <b>SEWING GROUP 1pm</b> <b>SOUND BATH 7pm</b> <a href="http://www.reikibydan.co.uk">www.reikibydan.co.uk</a>
<b>Wednesday</b>	<b>HATHA YOGA 10am</b> with Nikki Coope <a href="mailto:nikki.coope58@gmail.com">nikki.coope58@gmail.com</a>	<b>'MOVE IT OR LOSE IT'</b> <b>EXERCISE CLASS 12.30pm</b> with Krys Cave <a href="http://www.kryscavefitness.com">www.kryscavefitness.com</a>	<b>YOGA 7pm</b> with Jenny Tomes <a href="http://www.yogapractic.co.uk">www.yogapractic.co.uk</a> <b>First Wednesday</b> <b>MONTHLY W.I.</b> 7pm
<b>Thursday</b>	<b>PILATES 9.30am</b> with Nicki McGinn 07798 641593	<b>SHORT MAT BOWLS</b> 2pm	
<b>Friday</b>	<b>HATHA YOGA 10am</b> with Nikki Coope <a href="mailto:nikki.coope58@gmail.com">nikki.coope58@gmail.com</a>		<b>Last Friday</b> <b>MONTHLY RURAL</b> <b>CINEMA 7.15pm</b>

For more information please contact Jane Cromack on 01789 720319  
and look at the advertising notices on the various Village noticeboards,  
Facebook and [www.pebworth.org](http://www.pebworth.org)  
or just go along on the day and say hello!

# The Noticeboard

## Mobile Library



**Friday 22<sup>nd</sup> September**

**School Road layby** 11:15-11.30 am  
**Broad Marston Road** 11:35-11.50 am

## Flag Days For September 2023

**Sunday 3<sup>rd</sup>** Merchant Navy Day  
**Friday 8<sup>th</sup>** Accession Day of King Charles III  
**Saturday 9<sup>th</sup>** 999 Emergency Services Day  
**Friday 15<sup>th</sup>** Battle Of Britain Day

Les Madden

## 100 Club

July Winners

£25	D Lindsay
£15	R Bennett
£15	C Denham

**Congratulations!**  
*Robin*

## 100 Club

August Winners

£25	J Cromack
£15	R Bennett
£15	S Jordan

**Congratulations!**  
*Robin*

# Coffee on the Close

Mary's Room,

Pebworth Village Hall

1pm - 3pm



Held on 2nd & 4th Wednesday of the month

September	13th	27th
October	11th	25th
November	8th	22nd
December	13th	

*25th October we will have Evesham Safer Neighbourhood team from West Mercia Police attending to talk about keeping safe as Halloween and darker nights approach.*

**Free Squash for the Children & Activities during the holidays!**

**Prices are:**

**Mug of Tea or Coffee - £1.00**

**Refill - 50p**

**Unlimited Biscuits!**

**Hot Soup & Roll being served from 27th September**

**Price to be confirmed**

**For more information contact Jodi: 07944933001**

# The Pebworth Village Hall Quiz 2023



is on  
**Friday November 3rd**

Doors open 7.00pm  
(Quiz starts at 7.30pm)

Entry £5 per person (Up to 4 in a team)

Pay on the door (Cash or card)

*Ploughman's Supper available to buy in the interval.*

*Bar open throughout*

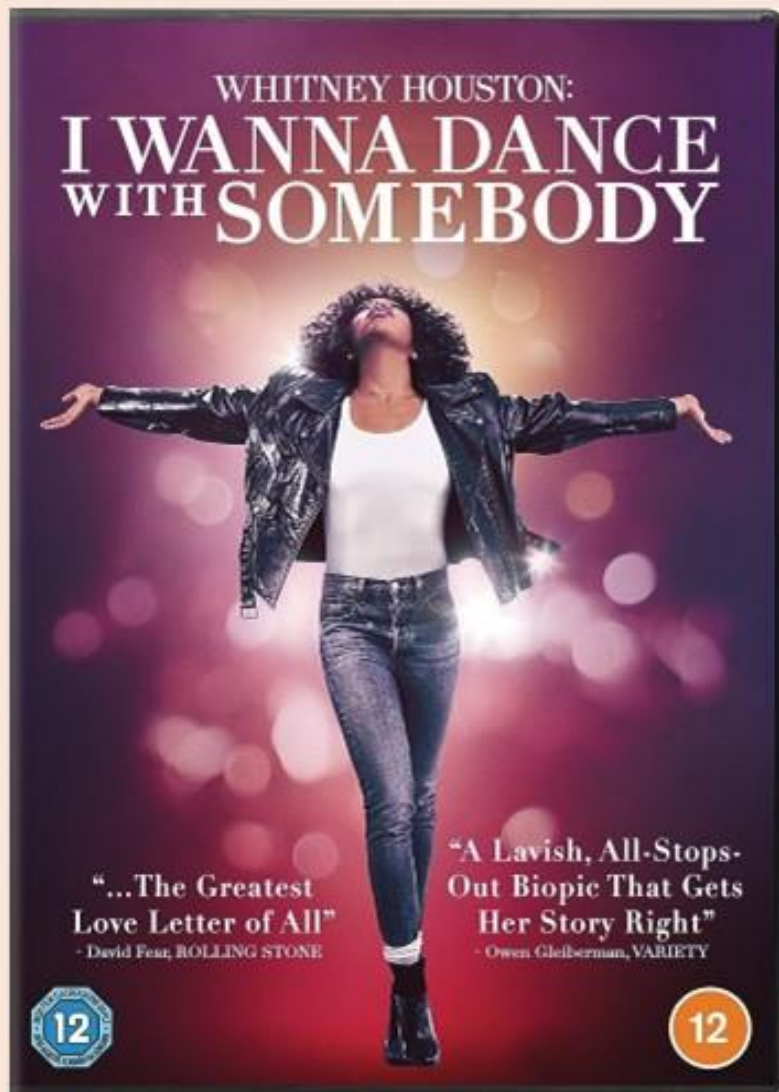
Prizes for the winners.  
Lemons for the worst!

For further info and to book your team a table or to find a team to join,  
phone Jane Cromack on 01789 720319 or text 07977071233  
or email [jvcromack@aol.com](mailto:jvcromack@aol.com)  
Proceeds to Pebworth Village Hall



# Pebworth Rural Cinema

Friday 29<sup>th</sup> September



Tickets £5.00 each and £2.50 12 and under

Drinks from 7.15pm | Film 8pm | Delicious food available  
before the movie and ice cream during the interval

# Wychavon Parish Games



The Parish Games are nearly over for another year. We had great fun at the Bell Boating and Pétanque. Unfortunately, due to various circumstances, we were unable to enter rounders, football & cross country which, hopefully, we can improve on next year.

We have moved on to the indoor pub games now. The ladies played host to Wick for the darts competition. Unfortunately, we lost, but we welcomed new faces from Meon Way Gardens to join us.

By the time the Piper goes to press we will have played Bretforton in the Men's darts and our cribbage team, who have been practicing weekly, will have played over at Bengeworth.

On 15th September we play skittles against Honeybourne which we hope will be an exciting evening under our Captain Dan Cotton as we hit the town for a game at the Ambassador Club.

If you'd like to get involved next year with the Parish Games, please contact Jodi or Ken Wood. We'd particularly be keen to form a Pebworth 5-a-side football team!

Jodi - [jodicotton10@gmail.com](mailto:jodicotton10@gmail.com)

Ken - [ken.w.wood@btinternet.com](mailto:ken.w.wood@btinternet.com)



The Pebworth  
bell-boating  
team

# Events in the Forest

The Forest events programme is packed with opportunities for you to join different members of the Forest team and explore beyond the usual trails, learn more about our native wildlife, and find out how your support is helping to grow the Forest.

Events run throughout the year and include:

- Guided walks
- Bluebell Wood Fundraising Open Days •
- Family walks and activities
- The Garden of Heroes and Villains
- BioBlitz
- WildTribe Holiday Club
- Mini Foresters monthly club
- Young Foresters monthly club

**View the full Forest event programme here:**  
[heartofenglandforest.org/events](https://heartofenglandforest.org/events)

## Workshops for adults

Our exciting workshops are an excellent way to experience the outdoors while learning new skills. With guidance from professionals, all materials and equipment provided, and stunning Forest settings, our workshops are for everyone.

Workshops include ceramics, candle making, needle felting and spoon making.

**View our 2023 workshops line up here:**  
[heartofenglandforest.org/workshops](https://heartofenglandforest.org/workshops)



WildTribe Holiday Club



BioBlitz



Mini Foresters



# Pebworth Parish Council

Abridged Minutes of Parish Council Meeting held on 3<sup>rd</sup> July 2023.

Edited by **Diana Beaumont**

Full minutes can be found at

<https://www.pebworthparishcouncil.co.uk/community/pebworth-parish-council-20229/parish-council-minutes-2023/>

**Next Meeting:**

4<sup>th</sup> September 2023, 7pm at Pebworth Village Hall

**Present:** Councillors: Richard Weller (Chairman), Simon Shiers, Denise Meynell, James Pearson (19:08), John Hyde, Sam Parkins & David Cranage

**In attendance:** County Councillor Adams (19:55), District Councillor Judith Ciotti, Mrs D Bowles (Clerk)

**Also in attendance:** Four members of the public

**Open Forum:** The Chairman suspended the formal meeting for the Ward Members and public participation.

**a)** 4 members of the public were in attendance:

- Judging for Britain in Bloom will take place on 13<sup>th</sup> July. Clerk confirmed she had requested amenity contractor to carry out the works requested by Pebworth in Bloom.
- There are trees on Long Marston Rd that are dead. Clerk to report.
- Thanks were given for the use of the Recreation Ground as a car park.
- Lindsay Roach, a Community Builder in Evesham, is working closely with the Meon Vale Residents Association and has been trying to get hold of Planning Officers regarding S106 monies.

**The Chairman closed the open forum and reconvened the meeting at 19:24**

## **Ward Members' Report:**

District Councillor Ciotti reported that:

- the signage around the attenuation pond at Meon Way Gardens requires further investigation which she will undertake.
- She has taken photos of the Meon Way Gardens area that is not being mown and forwarded these to the Planning Officer. He has stated that there is an enforcement case

relating to the open space and he will be carrying out a site visit.

- She has met with various residents, a Parish Council and a District Councillor regarding S106 monies which will not be released until the 350<sup>th</sup> house is built on Meon Way Gardens. There is no determination as to what these monies will be used for to date.
- Evesham is now part of Walkers are Welcome; a non-profit organisation which has been the result of several years of works by the rambling association.

County Councillor Adams's report follows these minutes.

## **Planning Matters Considered:**

- a) 23/01223/VARY** – Proposed : Variation of condition 2 of Reserved Matters Application 20/00606/REM to seek approval for changes to the trigger point for the Community Hub (consisting of Retail/Convenience Store, Community Building and Nursery Building) to be constructed and made available for public use from prior to the occupancy of the 300<sup>th</sup> dwelling granted planning permission under reference 14/03579/OUT dated 28th February 2017 and any subsequent Reserved Matters applications to prior to the occupancy of the 390<sup>th</sup> dwelling granted planning permission under reference 14/03579/OUT dated 28th February 2017 and any subsequent Reserved Matters applications. Reserved Matters Application 20/00606/REM was for the following description of development: Submission of Reserved Matters (internal access, appearance, landscaping, layout and scale) for a Community Hub (containing Class E(a) (retail) and Class E(f) (Nursery) and Class F.2(b) Community Building uses), and Employment Hub (Class E(g)(i)

Offices), including all associated works, pursuant to planning permission 14/03579/OUT (Outline application (with all matters reserved (access, appearance, landscaping, layout and scale) for future determination) for the erection of up to 400 dwellings (Class C2/C3), up to 4,000m2 employment hub (Class B1(a)-(c)) and a community hub (Class A1-A5/B1(a)/C3/D1/D2). Provision of new open space including parks and amenity space. Upgrading of existing access junction and provision of new emergency access off Campden Road and associated infrastructure, engineering and landscaping works including a new pedestrian/cycle link from Campden Road to the Stratford Greenway, sustainable urban drainage systems and all ancillary enabling works including demolition of existing buildings and structures) dated 28th February 2017) - date of decision: 23/09/2022. At Long Marston Airfield, (predominantly The South Eastern Corner), Campden Road, Lower Quinton Stratford-upon-Avon. Following consideration Clerk to respond "If there is to be any movement of the trigger point the Parish Council request that it be phased eg provide the nursery at the 300<sup>th</sup> dwelling, the community building at the 350<sup>th</sup> etc"

- b) **W/23/01124/FUL** Location: Bank Farm, Front Street, Pebworth, Stratford Upon Avon, CV37 8XQ Description of Proposal: Demolition of existing agricultural barns and replacement with 5no. detached dwellings. Following consideration, it was **resolved** to object to this application. Cllrs Cranage & Pearson to provide comments for Clerk to forward.
- c) **W/23/01125/FUL** Location: Low Furrow Farmhouse, Low Furrow Farm, Dorsington Road, Dorsington, Pebworth, Stratford Upon Avon, CV37 8AP Description of Proposal: Installation of 24 Ground Aligned Photovoltaic Solar Panels. Following consideration Clerk to respond with "No comment".

#### Decisions:

- d) **W/23/00798/FUL** Proposal: Variation of Condition 1 on granted planning approval 21/02659/FUL - Erection of dwelling house and associated development. Location: Blenheim Hall, Buckle Street, Honeybourne, Evesham, WR11 8QQ. **Application approved subject to conditions.**

- e) **W/23/00507/FUL** Change of use of abandoned dwellinghouse to a holiday home, resurfacing existing drive and associated works. Location: Land at (OS 1196 4875), Dorsington Road, Dorsington, Pebworth. **Application approved subject to conditions.** It was pointed out that this can only be used as a holiday home.
- f) **W/23/00788/HP** Double garage with first floor space above to be used as Physiotherapy room / Home Office and toilet facilities. Location: Meadow Barn, Buckle Street, Ullington, Evesham, WR11 8QH. **Application approved subject to conditions.**
- g) **W/22/02306/OUT** Outline application for the erection of 4no. self-build dwellings with all matters reserved apart from access. Location: Paddock Off, Dorsington Road, Dorsington, Pebworth. **Planning Application Refused.**

#### Finance:

- a) The Council gave consideration to the first quarterly bank reconciliations, account balances and income and expenditure budgets. It was **resolved** to accept these by all Councillors.
- b) The Council gave consideration and unanimous approval of the payments listed in Appendix A, confirming the payments in Appendix A have been approved by full Council and there is provision within the budget, and that financial regulations and relevant policies have been followed. Cllr Weller to authorise the payments made by internet banking.

As there is not a meeting in August it was agreed that any regular monthly invoices requiring payment be approved via email by Chair or Vice-Chair. These payments to then be retrospectively approved at the September meeting.

#### Council & Community Matters:

- a) Quotes were considered for repair of wall at Pipers Corner and the further issue at Town Pool Car Park. The stonemason stated he did not feel these were dangerous. Clerk to request Lengthsman measure the gap in the Pipers Corner wall which can be monitored.
- b) The quote requested for the below works to be added to the amenity contract has been provided at £25. It was **resolved** for the Clerk to accept the quote and notify the amenity contractor.

- a. Mow the area on the Recreation field (opposite the Masons Arms) which contains the WW1 Memorial Stone, the Peace Trees and the bench.
  - b. Strim under the high visibility white metal fence from its start the other side of the bus stop to its end at the small gate leading onto the field.
  - c. Mow the verge on the roadside of the white metal fence from the Bus Stop area around to the small gate leading into the field.
- c) Members considered a response to P C Matt Beards' email forwarded on 21<sup>st</sup> June regarding locations in the village where:
- o excessive speeding is a problem - Little Meadows & Honeybourne Rd and
  - o locations that are impacted by anti-social behaviour- The Close, Broad Marston Rd, the woods at Broad Marston, St Peters Church and Meon Way Gardens.
- Clerk to provide responses.
- d) Cllr Cotton to provide a draft response to the Town and Parish Council Survey 2023 and forward to Cllr Weller before submission.
- e) Cllr Cotton's email forwarded on 15<sup>th</sup> June. It was **resolved** for Clerk to contact the Planning Officer regarding the Meon Way development to obtain the latest S106 document and forward to Members once received.
- f) Abandoned car in Town Pool car park now removed.

#### **The Close & Recreation Field**

- a) Clerk has received confirmation that Kompan is aiming for the new play equipment installation to be completed by 7th July. Clerk to arrange an independent safety inspection.
- b) It was resolved to hold an open event on Friday 14th July, 4.30pm for the new play equipment. Members of the District Council to be invited as part of the Community Legacy Grant agreement. Budget set at £100 for balloons. Clerk to contact school for two children to cut the ribbon.

#### **Cemetery:**

The headstone inspection has been carried out and report awaited.

#### **Streetlighting:**

All the lights are now numbered.

#### **Highway Matters:**

No further update regarding culvert at Little Meadows. Clerk to chase.

#### **Lengthsman/Maintenance Matters:**

##### **a) Works carried out:**

- o Inspection of playing field has taken place
- o Weed spraying has taken place around the parish

##### **b) Future Tasks:**

- o Top up the grasscrete area with soil opposite the school and any areas that need it on Front St.
- c) Members noted VAS data which is appended to the full minutes. See link in header.

#### **Public Rights of Way:**

- a) A report of an overgrown footpath on Broad Marston Rd has been reported. Clerk to contact landowners requesting this be trimmed back.
- b) Missing PROW sign – Cllr Cranage to investigate.

**Matters Raised by Members:** The following matters were raised by Council Members for consideration for future agendas:

- a) Presentation of Freedom scroll to take place on 4th September at 6:30pm.

#### **Confidential Staff Review:**

The Clerk's annual appraisal has been carried out with Cllr Weller. It was resolved that the Clerk's salary be increased by one spinal column point from point 16 to 17 on the NJC salary pay scales with effect from 1st July 2023.

#### **Date of Next Meeting:**

Monday 4th September 2023 at 7.00pm in the Village Hall, Pebworth.

**Closure of Meeting: The Chairman closed the meeting at 21:00 hrs**

Your District Councillors are Judith Ciotto ([Judith.ciotto@wychavon.net](mailto:Judith.ciotto@wychavon.net)) and Hannah Robson ([hannah.robson@wychavon.net](mailto:hannah.robson@wychavon.net))

## County Councillor Report – Pebworth

Month: July 2023

Prepared by Alastair Adams

Littletons Division, Worcestershire County Council

A BIG THANK YOU to the volunteers in Broad Marston who helped with maintaining the flood alleviation scheme in the HOEF field – see below photo. **Still some more work to be done to dig a channel.**



New “SCHOOL KEEP CLEAR” signage installed by Highways outside Pebworth school:



Also new “grass-crete” installed by Highways on grass verge on School Lane to stop the verge being cut up by lorries. Once the grass grows, it will look like as before but won’t need constantly repairing.



### Highways:

There are still a lot of road and footway maintenance in progress in Worcestershire so there will be loads of road closures so please check <https://one.network/> to see all the temporary road closures on a regular basis.

- **30MPH speed limit in Stratford Rd from Badhams** towards Pebworth has now been extended and new 30mph signage erected.
- **The broken gully grate** on the junction with Elm Close has been reported and marked up for replacement and repaired all within a week!
- Opposite the pub on Chapel Rd by the Stratford Rd junction, there is a **noisy manhole** cover that clangs every time a vehicle drives over it. It has been reported for repair.
- **4 Blocked gullies** along Broad Marston Rd have been reported to be cleansed.
- **Flooding at Chalk Farm , Buckle Street** – Culvert jetted, and WDC have been requested to write to all resident asking them to maintain the ditches outside their properties.

- **Flooding in Dorsington Rd** at junction with Long Marston Rd. Highways have jetted the culverts under the road, and HOEF have been requested to dig out their ditches.
- **REMINDER** – Due to the **heavy rain storms** we have had recently, there is debris resting on top of some of the road gullies and this reduces the effectiveness of the drains. So if you can, please check the road gullies near your house and if needed remove the leaves. Blocked drains can be reported on <https://capublic.worcestershire.gov.uk/HighwaysFaultsPublic/DrainageFault.aspx>
- Abandon car in Pool car park has now been removed.
- Ditches along Pebworth Rd and Buckle Street need clearing. WCC & WDC are writing to the residents to remind them they are responsible for clearing the ditches outside their property.
- I have requested the roads are swept a couple of days before the Britain In Bloom inspection on 13<sup>th</sup> July.
- **REMINDER** – This is the time of the year where weeds and grass are growing fast and these can quickly damage roads and pavements if left unchecked. So I have asked the Parish Council to use their Lengthsman to apply weedkiller where necessary.

As always, if you have any issues on any Highways matters, please report it on the WCC website [http://www.worcestershire.gov.uk/homepage/98/report\\_it](http://www.worcestershire.gov.uk/homepage/98/report_it)

Also remember a photo of the Highways problem is as good as “a thousand words” so always take a photo where possible.

#### **Planning Decision – W/22/02306/OUT Paddock off Dorsington Rd – Refused**

Thank you for everyone that wrote into planning to object to the above – your voices were listened to and the planning has been rejected. See the decision notice below:-

*The application site lies entirely outside of a defined settlement boundary as identified under Policy SWDP 2 of the South Worcestershire Development Plan*

*2016. The site is therefore defined as open countryside where development shall be strictly controlled. The proposed development would fail to accord with the provisions of policy SWDP2 part C of the SWDP. The proposed development would go against the SWDP Development Strategy and the sustainability principles it is based upon (as set out under policy SWDP2) in that it would not safeguard or enhance the open countryside contrary to provisions of South Worcestershire Development Plan, 2016 Policies SWDP 1 and SWDP 2 and guidance contained in the National Planning Policy Framework (2021). In light of the fact that the Council can demonstrate a supply of self-build dwellings to meet the need, it is acknowledged that the locational strategy for development in Policies SWDP1 and 2 are out of date. However, the impacts of the development would significantly and demonstrably outweigh the benefits when assessed against the NPPF when taken as a whole. In its present form, the site contributes to the rural setting of the village of Pebworth and the adjacent conservation area, views towards nearby listed buildings and existing pond. The proposal would be visible from several public vantage points, including those within the conservation area and from the Public Right of Way 522 ( C ) to the north. The latter viewpoint is noted as a good example of the Village Claylands landscape type within the adopted Pebworth Neighbourhood Plan and is of special importance. The existing site also visually contributes to the ‘green, soft edge to the village’ that is identified in the Pebworth Conservation Area Appraisal.*

#### **County Council Divisional Fund**

Applications for the Divisional Fund are invited from local community organisations that are manned by volunteers and require a little help to buy equipment or services. To apply, please contact me on [adams.pebworth@gmail.com](mailto:adams.pebworth@gmail.com)

The following grants have been requested, and some have already been approved & paid

1. Honeybourne Village Hall – grant to help provide a Senior Citizen lunch for the Coronation

2. Honeybourne School – grant to help build a “Growing Hope” garden
3. Honeybourne Bowls Club – grant for a contribution towards a new mat
4. Cleeve Prior Heritage Trust – grant for new tables
5. Pebworth Bells – grant to help improve their Website

Very concerning should the drug fall into the hands of Children, they are illegal and have the same affects as regular cannabis.

Please report to the Police on 999, or 101, or confidentially via Crimestoppers calling [0800 555 111](tel:0800555111) or by visiting their website: [www.crimestoppers-uk.org](http://www.crimestoppers-uk.org)

Your County Councillor, Alastair Adams, can be contacted on [adams.pebworth@gmail.com](mailto:adams.pebworth@gmail.com) or mobile 07725 979 277 or [www.alastairadams.org](http://www.alastairadams.org).

### Notice from the Police – Cannabis edibles awareness.

There has been an increase in cannabis edibles in circulation which are aimed towards Children and young adults. The attached images highlight the efforts to disguise the drug as legitimate sweets.

Very concerning should the drug fall into the hands of Children, they are illegal and have the same affects as regular cannabis.

Please report to the Police on 999, or 101, or confidentially via Crimestoppers calling [0800 555 111](tel:0800555111) or by visiting their website: [www.crimestoppers-uk.org](http://www.crimestoppers-uk.org)

**WHAT ARE CANNABIS EDIBLES?**

- There are many forms of edibles, including
  - Sweets
  - Cakes
  - Chocolates
  - Biscuits
  - Syrups
  - Butter/Spread
  - Oils
- Edibles contain cannabis oil which holds high amounts of THC – the psychoactive component of cannabis.
- THC remains illegal in the UK as a class B controlled drug - therefore cannabis edibles are a class B drug.




Solar panel theft.



We have received a report of a large-scale theft from a solar panel farm outside Broadway. Following on from some received information, Evesham SNT has worked with the Divisional Support Team and has located in excess of 550 solar panels. A male has been arrested on suspicion of theft. The solar panels were located just over our policing border in Gloucestershire. Enquiries are ongoing and we are working with the solar farm to look into ways to prevent further thefts.

Rural crime is a priority, and we will continue to target the offenders who cause most harm in our communities.



### Are you aware of how to contact your local policing team?

Your local Neighbourhood Officers are PC Matt Beards, PC Alex Prentice and PCSO Bradley Sansom. They can be contacted by emailing [eveshamrn.snt@westmercia.police.uk](mailto:eveshamrn.snt@westmercia.police.uk).

We are actively involved with social media accounts, please follow them for updates on our work, and local events/news. These are @EveshamCops (Twitter) and @EveshamSNT (Facebook).

**Have you signed up to Neighbourhood Matters?**

West Mercia Police are looking to sign up as many residents as possible to Neighbourhood Matters. This is a completely free service, and takes around 2 minutes to sign up. Once your account is activated you will receive local news and updates from your local policing teams, together with updates from our HQ teams.

Neighbourhood Matters allows you to engage with a post directly with the team, send them a reply to a post and the team can update you personally.

Take a look at the website for further details or scan the QR code below:

<https://neighbourhoodmatters.co.uk/>

## Drop in Sessions

We now have access to a community engagement van so the team can set up a mobile “office” to allow us to speak with residents and provide advice and crime prevention information.

***Keep up to date via Neighbourhood Matters (NHM) for future dates and locations. We have a new community engagement calendar on NHM which will highlight our events.***



## INFO FROM PEBWORTH PARISH COUNCIL

Check <https://one.network/> to see all the temporary road closures on a regular basis.

**Report it...** <https://www.wychavon.gov.uk/report-it>

All under one roof! Wychavon District Council has provided a number of things that can be reported online from the comfort of your own home whether it be flytipping or abandoned vehicles to compliments and complaints.

<b>Council Tax &amp; Benefits</b> <ul style="list-style-type: none"> <li>• <a href="#">Benefit fraud</a></li> <li>• <a href="#">Change in circumstances</a></li> <li>• <a href="#">Moving in or moving out of a property</a></li> </ul>	<b>Parking and Transport</b> <ul style="list-style-type: none"> <li>• <a href="#">'Pay &amp; Display' Ticket Machine Faults</a></li> <li>• <a href="#">Highways Defect</a></li> <li>• <a href="#">Street Light Fault</a></li> <li>• <a href="#">Appeal against a parking fine/ charge</a></li> <li>• <a href="#">On street parking</a></li> <li>• <a href="#">Report a pothole</a></li> </ul>
<b>Homelessness</b> <ul style="list-style-type: none"> <li>• <a href="#">Streetlink</a></li> </ul>	<b>Housing</b> <a href="#">Report an empty home</a>
<b>Environment and animals</b> <ul style="list-style-type: none"> <li>• <a href="#">Discarded needle or syringe</a></li> <li>• <a href="#">Dog Fouling</a></li> <li>• <a href="#">Graffiti And Fly Posting</a></li> <li>• <a href="#">Japanese knotweed</a></li> <li>• <a href="#">Nuisances</a> (smoke, noise, light, accumulations, dust/odour, insects/flies, bonfires)</li> <li>• <a href="#">Over Grown Shrubbery on pathways</a> (Worcestershire County Council)</li> <li>• <a href="#">Problem with a litter or dog bin</a></li> <li>• <a href="#">Abandoned Vehicles</a></li> <li>• <a href="#">Damaged Street Sign</a></li> <li>• <a href="#">Dead Animal</a></li> <li>• <a href="#">Fly Tipping</a></li> <li>• <a href="#">Travellers on public land</a></li> <li>• <a href="#">Untidy front gardens</a></li> <li>• </li> </ul>	<b>Planning</b> <ul style="list-style-type: none"> <li>• <a href="#">Report a planning enforcement issue</a></li> </ul> <b>Refuse Collection</b> <ul style="list-style-type: none"> <li>• <a href="#">Report a missed bin collection</a></li> </ul>

## Pebworth Village Contact List

Role/Organisation	Name	Email Address	Contact Number
Pebworth Piper Editor (Also Pebworth.org and Pebworth Village Facebook Page)	Karen Pearson	<a href="mailto:kpearson@active-research.co.uk">kpearson@active-research.co.uk</a>	07887 613301
Village Hall (Enquiries & Bookings)	Jane Cromack	<a href="mailto:jvcromack@aol.com">jvcromack@aol.com</a>	01789 720319
St Peter's Church Warden	Elizabeth Spencer	<a href="mailto:Pebworth.church@gmail.com">Pebworth.church@gmail.com</a>	01789 720078
Women's Institute	Jenny McLeish	<a href="mailto:jenny.mcl@tiscali.co.uk">jenny.mcl@tiscali.co.uk</a>	01789 720064
Pebworth In Bloom	Yvonne Wood	<a href="mailto:ken.w.wood@btinternet.com">ken.w.wood@btinternet.com</a>	01789 720296
Vicar		Currently vacant. Please contact Craig Bishop, Chipping Campden	01386 841927
Church Bell Tower Captain	Neil Garner	<a href="mailto:Pebworth.bells@gmail.com">Pebworth.bells@gmail.com</a>	
Petrus Editor	Claire Poore	<a href="mailto:editor@thepetrus.co.uk">editor@thepetrus.co.uk</a>	01386 832800

If you would like to be added to this list or can suggest other useful contacts, please let me know at [kpearson@active-research.co.uk](mailto:kpearson@active-research.co.uk)